

## Autumn News

It has been an incredibly busy, long and positive Autumn term. The opening of the Primary site in Kilminster has been hugely successful with 12 students on roll on that site. Staff have done an incredibly good job across all three sites, building on relationships with students and embedding the transition work we did with students moving across sites.

The re-structure of the school was a deliberate and carefully planned process, and I am so proud of the team and students who have taken to the new structure extremely well.

This term we have focused on engagement, building relationships and adaptive teaching. We have completed subject reviews on English, Art and Humanities, following our Quality Assurance process. Students have produced great work, and the amount of work shows clear progress and links to learning.

We have facilitated three external visits this term -our school improvement partner, John Seal who is an HMI inspector and works within our cluster to ensure schools are compliant and always working towards being Outstanding and Wiltshire and Somerset LA quality visits. These visits have been really positive and show the school in a positive and progressing light.

These are some feedback comments:

- Leaders have developed and established a strong and well-balanced curriculum which is delivered well across all three sites. Those who teach are supported by a clear set of plans for each subject from primary through to key stage 4. Lesson plans include suitable references to students' EHCPs.
- PSHE is the core of the curriculum and is well set out and implemented by staff and the PSHE lead. Students are provided with appropriate information about relationships and sex education, internet safety and the risks of alcohol and drugs. In a visit to a lesson, students were seen discussing personal hygiene and how to manage colds. The lesson was well-planned and delivered. Students were seen to be interested and keen to enter into discussions about how not to spread germs.

# Wessex Lodge School

CARE | ADAPTABILITY | RESILIENCE | EMPATHY

Outcomes  
First  
Group.



- The newly opened primary setting provides suitably appropriate content including daily phonics, pleasant spaces to support calming and reassurance when younger students are feeling vulnerable.
- The welfare team provide a highly effective support system for students and staff alike. The team are well-trained and empathetic to students' needs and concerns. The strong links with families is another 'string' to the school's bow enabling clear communication, providing information and addressing any concerns promptly and reassuringly. The close working relationship with the therapy staff ensures education staff are provided with specialist training where required in EHCPs.
- The headteacher provides clear and unambiguous leadership and direction. She is ably supported by the senior leadership team whose restructuring enables all three sites to have strong day-to-day operational leadership.
- Safeguarding arrangements are effective and regular checks of the single central register take place. Staff are regularly briefed and trained on the wide range of safeguarding concerns and vulnerabilities. Productive links with external services and agencies including all the local authorities that send students.

We are really looking forward to returning after Christmas break I would like to take this opportunity to wish you all a Merry Christmas and a peaceful and safe New Year.

*Kate Stradling*

Wessex Lodge School - Headteacher



# Wessex Lodge School

CARE | ADAPTABILITY | RESILIENCE | EMPATHY

Outcomes  
First  
Group.



It is hard to know where to start to sum up all that has gone on this term across the school. From the September sunshine to the December storms, we have experienced school life in all weathers.

Watching staff and students grow into their new sites has been a real pleasure. Seeing students engage in the immersive room at the Primary, doing Science experiments at the Ark to building sheds for animals on the farm there has been a huge amount going on. We have seen an increase in students engaging in their academic learning with many completing assessments in English and Maths as well as Mock GCSE's. Plenty of students are awaiting their AQA certificates. Well done to them all!

Offsite Outdoor Education has been busy with paddling, climbing, 5 miles walks and some geocaching. Forest school both on and off site continues to grow with the woods becoming a regular venue for students whilst those on site are often in the yurt with wood burner alight. We have seen great output from the DT room as well as students helping with Farriers and vets. The primary students have enjoyed their new space, and it is great to see the friendships develop as the site grows. The Ark students on Fridays have enjoyed their football in the park and their increasing opportunities to be out in the community.

The school is full of energy, wherever you look there a busy students and staff enjoying their work and building an outstanding environment to flourish in. I would like to thank all the staff for the dedication and hard work and to all students for trusting us to look after you every day. I wish you all a restful holiday and a Happy Christmas!

Ben Coombes

Deputy Head



## *Celebrating Our Term at the Newmead Farm Site*

As we draw this term to a close, it's time to reflect on what has been a wonderfully engaging and productive period here at our school farm site. Our students, from the Dragonflies to the Pigeons, Wildcats, and Maple groups, have truly embraced their new environment. Many of our newcomers have found their feet, becoming settled and actively engaging in the tasks set in both English and Maths.

Throughout the term, we have seen fantastic involvement across various subjects, including Equine studies, Farm lessons, Design Technology (DT), PE, Art, Forest School, and Outdoor Education. A particular highlight has been the go-cart construction project in DT, where a student showcased their creativity. In home cooking skills, our pupils have been busy cooking cakes and cookies, which they deliver weekly to the local Maiden Bradley coffee morning—a lovely connection with our community! Additionally, our Remembrance gathering in November was a poignant occasion, with pupils creating beautiful poppies and silhouettes in DT to honor this important day.

Outdoor education has thrived, with numerous moments spent kayaking and climbing. The standout moment was our first-ever lead climb by a pupil, showcasing incredible bravery and skill. It has been heartwarming to witness both pupils and staff enthusiastically exploring the local area surrounding the farm on walks, fostering a strong sense of community. Our PE lessons have been equally impressive, with students leading sessions and making regular use of the gym. The introduction of high-intensity sessions and bleep tests has injected a fun competitive spirit, alongside the informal games of football that we all look forward to during break and lunch.

What has truly warmed my heart this term is the community aspect of our site developing so beautifully. Our gatherings are becoming more meaningful, embodying the ethos of our three Bs: being kind, being respectful, and being safe. This spirit has created an environment where both pupils and staff feel supported, ensuring that our site remains a happy and safe place for everyone.

Despite a few bumps along the way, it has been impressive to see our pupils learn from their mistakes, moving forward and seizing the myriad of opportunities presented by the farm. The term culminated in a fantastic 'around the world' celebration at Christmas, uniting all three sites for a festive celebration.

In closing, I would like to extend my sincerest thanks. To all the pupils, your efforts this term have been commendable—I am so proud of each and every one of you. A huge thank you to the staff for their dedication and commitment in providing these young people with enriching experiences. Last but certainly not least, thank you to adults, parents and carers for your ongoing support.

Wishing you all a Merry Christmas and a Happy New Year!

*Stuart Hamilton*

*Assistant Head*





*Autumn at the Ark* We have had a fantastic Autumn term here and the students have astounded everyone with their adaptability and willingness to work. The term started with a complete change for much of the students. We had a few students remaining here from last year, while a few students transferring over from the Farm and some new students starting with us in September.

All Students have settled in very well to compliment this change in the structure of Wessex Lodge School we had a professional video tour completed, please see the link below, or take a look at the website: <https://www.wessexlodgeschool.co.uk/about-us/virtual-tour/>

The focus of the site and staff is upon next steps, where are our students going, what will they be doing, are we preparing them for those next steps. This means that we are actively seeking opportunities for the students to take part in volunteer projects in the community, we are already looking at work experiences for the students, as well as organising visits to colleges that have been identified as possible options for next year. We have identified the Ark as being used for students following an accreditation route, this gives more time to the teaching and progress towards formal exams with less focus on the vocational studies generally available at the Farm.

Over this year we are looking to revamp the presentation of the Ark, especially the outside of the school and the driveway. We now have arranged funding for some changes that include replacing the fascia boards above reception and changing the potted plants in the driveway. The revamp of the schools outside will present us in a better light to our current and future students, the aim is to present the school to initial view as interesting, caring, pleasant, which will help our students feel more comfortable here.

I would like to thank the staff here at the Ark for their hard work with the students over this term. The calm, busy atmosphere created here at the school is down to their diligence, awareness, planning and focussed teaching that has invigorated the curriculum, challenged the youngsters individually, and supported them in their transition and learning.

We are already planning this year's Residential trip. Last Summer (July) we went to spend a week at the PGL holiday site at Beam House in Devon. The students had a fantastic time and there is a newsletter on the school website. This year we are planning to take the Year 10's to Boreatton Park, Shropshire for a week of activities. We have already sent emails to all the Year 10 students asking them if they want to express an interest in the trip. This is a fantastic opportunity for those students to go away for a weeks residential at a resort that specially caters for school groups and offers amazing chances to undertake different activities including a selection from archery, abseiling, air ball archery tag, climbing, canoeing, fencing, disc golf. These some of the activities, it really is an amazing opportunity and the Y10's will get so much from it. Below is a Hyperlink to the Boreatton Park website with some more information.

<https://www.pgl.co.uk/en-gb/school-trips/resources/parent-guide/about>

<https://www.pgl.co.uk/Files/Templates/Designs/PGLCore/res/swf/virtual-tour/boreatton-park/tour.html>



- Phil Redding Ark Site Lead



## *Celebrating our Primary School's first term...*

As the autumn term draws to a close, I am thrilled to reflect on what has been a magnificent opening term for Wessex Lodge Primary. Our students have truly embraced their new school, settling in remarkably well with their new staff, environment, and routines. Every one of them has shown resilience and adaptability, thriving under our non-negotiables of being safe, being kind, and being respectful.

Academically, we have seen fantastic progress across the board, with students engaging brilliantly with our STAR assessment platforms. Equally important has been the significant SEMH development captured through Evidence for Learning (EFL). The relationships built and sustained between students and staff, as well as amongst peers, have been a cornerstone of our success, fostering an environment full of fun, learning, and play in our wonderful new setting.

This term has also brought exciting opportunities beyond the classroom. Students participated in meaningful visits to the local memorial for Remembrance Day, explored animal studies at the farm, and enjoyed enrichment activities at Bath City Farm. These experiences have added depth and joy to our curriculum and have been cherished by students and staff alike.

I would like to take a moment to highlight and congratulate every student on their successful transition from a part-time to a full-time timetable within just 10 weeks—a huge milestone for both the students and our school community. Well done to you all!

Finally, I want to extend my heartfelt thanks to our incredible staff team. Opening a brand-new school with 14 students to support and build relationships with was no small task, but you have risen to the challenge with unwavering dedication. Your hard work, care, and empathy create a nurturing environment where our young people can truly thrive. The progress we've seen this term is a testament to the collaboration and commitment of everyone involved.

I wish all our staff, students, and their families the happiest Christmas and New Year. I look forward to hearing all about your exciting holiday adventures when we return. Just remember—leave the yule log for me!

Warmest wishes,

*Ant West - Assistant Headteacher*

## English

In today's interconnected world, mastering English is more important than ever. But it's not just about learning grammar and vocabulary — it's about being taught in a way that sparks creativity, builds confidence, and fosters deep understanding.

A truly great English education goes beyond rote memorization. It inspires students to think critically, communicate effectively, and explore the world through literature and language. Teachers who create engaging lessons, encourage diverse perspectives, and cultivate a passion for reading and writing, play a vital role in shaping confident speakers and thoughtful writers.

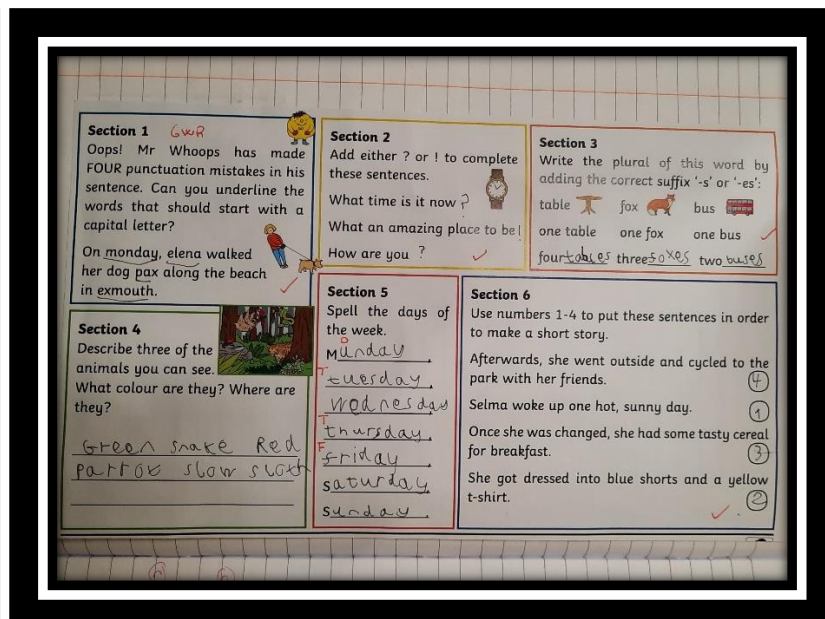
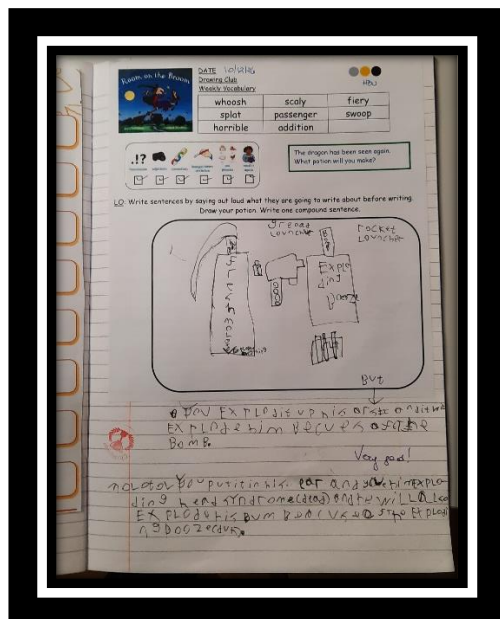
Across our schools students have learnt how to analyse a selection of stories written by Roald Dahl, think critically when comprehending plot lines in stories, master the intricacies and nuances of poetry and understand writer's viewpoints based on their culture. This rich and diverse learning helps students develop skills when meeting people in real life and further on for the world of work.

There have been several examples of success this term from our youngest students starting to read with more fluidity all the way to our oldest students taking real or mock examinations. We are all so proud of the students we teach and see so much potential in each and every one of them. We are already looking forward to them learning more about creative writing and poetry next term and for are school leavers lots of preparation, so they are ready to face their examinations.

So many teachers share their student's work with me, and you can see a few examples here. Rossana's students use lots of imagery to bring the lessons alive and students such as Olam have used their love of rap music to create emotive poetry.

I can't believe the first term is already over and look forward to what 2025 brings. Wishing you all a Merry Christmas and a great New Year.

Dean Warrington – English Lead



# Wessex Lodge School

CARE | ADAPTABILITY | RESILIENCE | EMPATHY

Outcomes  
First  
Group.



*"The farm is an amazing space for students to explore  
I loved the Primary site, students and staff were so  
welcoming*

*The Ark feels like a college (which is exactly what we are  
trying to achieve)*

*Wessex Lodge is a great place to visit if you want to see  
how to utilise spaces effectively and well (this was also  
mentioned in David Discusses last Friday)*

*the staff and children are great! You should be really  
proud of what you have achieved .*

*Well done to all of you!*

School views...

Just wanted to feedback on the experience we've had with Wessex lodge so far. Sorry it's long  
just wanted to make sure I covered everything...

K started Wessex lodge school in September after failing to thrive and cope in both a mainstream  
school and resource base. K had been on a part time timetable since February 2022 only  
attending less than a half day. As a parent another school change obviously caused some  
apprehension as it was his 2nd school change, from the beginning of his journey with Wessex  
lodge everything has been extremely positive, K seemed very happy with the school from our visit  
at the open day and I was also. Everything has been so positive, and I felt from the beginning this  
was the place for K.

I attended a review on Friday 3rd where we discussed K's 10 week school journey he'd been on.  
As his Mum as I extremely happy to say that the progress he has made is absolutely incredible  
and this is all down to the hard work that the team put into all the children. K is now close to  
attending full time which was my biggest worry, he is socially bonding with the other children in  
his school and over all seems really happy. On top of all of this his work has come on leaps and  
bounds and he is actively trying and engaging, this has also progressed so much over the 10  
weeks he's been at Wessex lodge. He's willing to do work at home to which he has never done. K  
has always struggled with regulating himself if he gets upset or angry, at Wessex lodge he has  
been well supported and able to turn things back around either on his own or with support, this is  
something else he has never been able to do, always resulting in him being collected.

Not only are all the staff supportive with K they have been supportive with me also and I feel I can  
easily communicate any worries or concerns I have with any member of staff, these things are  
also dealt with extremely quickly. Staff also are great at communicating on K's day both the good  
and not so good although the staff view the not so good moments as small blips and do not  
focus on the negative, for K this is a massive thing as he always holds onto the negatives and not  
the positives.

Overall, I have seen such a change in the way K views school and his outlook on education and I  
am so grateful for all the team and the hard work they put in. I'm really looking forward to Ks  
future with the school  
Written by Parent of K.



## Wessex Lodge Raises Money for WHY

At the end of the last academic year students, parents and staff came together to celebrate another fantastic school year. With a wonderful 'carnival' theme fun day organised the site was turned into an array of games, stalls and quizzes. As with previous years it was decided that the school would raise money for a local charity and this year's recipient was WHY.

WHY are a local charity that provides therapeutic support for children, families, and individuals in Bath and Northeast Somerset, Somerset, and Wiltshire who are affected directly or indirectly by cancer and other life-threatening conditions. They are dependent on people raising money in order to provide these services.

Wessex Lodge School raised over **£400** pounds and presented this to Robbie Newton, Community Fundraiser in September.

The school look forward to supporting WHY in the future.



## World Mental Health Awareness Day

On Thursday 10<sup>th</sup> October, as part of our ongoing commitment to support the wellbeing of our pupils we all came into school wearing yellow to mark World Mental Health Awareness Day.



## Linking in with the local Police

As part of our inclusion and engagement work at Wessex Lodge school we enjoy collaborating with our local agencies, including the police. At the beginning of the new academic year, we invited local PCSO Lukasz Kolasinski to provide advice to students on 'On-Line Safety' the young people engaged well with this, taking on board strategies to keep themselves safe when on-line.

As well as this we aim to strengthen the relationship between school, home and police by challenging our young people's perception of them. To help this PCSO Lukasz kindly bought along his Ford Ranger Rural

Response vehicle and spent time after the groups letting them sit in the car, putting the lights on and speaking to them about how he got into his role and how they could get into policing.



## Remembering those who have fallen

At Newmead Farm the students created some fantastic features to pay respects to those service men and women who gave their lives on the battlefield. In DT and Art poppy installations were made celebrating the official symbol for Remembrance Day, along with purple ones in honour of the fallen animals that served their country. Another beautiful piece created in art was that of the 'fallen soldier' silhouette. In Home Cooking students prepared display bread wreaths to mark the occasion. Site Lead Stuart Hamilton lead the gathering by speaking about why the day was so important, but also made this relevant to our young people today, bringing the moment in line with our aims of the school of 'Being Kind, Being Safe and Bing Respectful'.



## Wessex Lodge Student Headed to Westminster



A year 11 [Wessex Lodge School](#) student has been selected to join a group of young people representing Adoption UK. They will have the opportunity to meet Janet Daby, the Minister for Children, Families and Wellbeing, to discuss important topics, such as education, mental health and identity.

Headteacher, Kate Stradling, shared *"It is this student's dream to talk to politicians about her experiences and influence change for other young people, so she is thrilled to go to Westminster. It's an excellent opportunity to gain experience of speaking about topics that matter to them, to a person with considerable power to make a difference."*

**Student's  
words...**

### The journey

We arrived in Chiswick in London and got the tube up Covent Garden and walked twenty minutes up to Westminster. We waited about thirty minutes outside the department of education and decided to join the group when they arrived.

### The group

The group was fifteen kids and three adults who had planned the event. We met some of the group outside while waiting. When we got in a few more showed up and we were greeted by the rest of the group. We all then went to a waiting area where we got to know each other and talk until we were taken to a room for the meeting, and we sat in three different groups. We all had specific things to talk about. The groups were mental health, education and identity. I was in the mental health group.

### Meeting the minister

When the minister got there, she introduced herself and went to the education group. While she was at the education table my group and I discussed what we would say. We talked about there not being enough support for adopted, traumatised and neurodivergent young people in an environment that is meant to be safe for all kids. We also pointed out how long EHCPs and assessments take and how they should be automatically be provided to adopted kids. I used my own experiences to prove why that should be the case. When the minister came to our table we repeated everything we wrote down and me and another person gave her our notes so that she could reread all of it if needed. She then was very thankful for us going to visit and said she will try her best, but changes like these take a long time to complete. We then went back to the waiting room where all the adults were thanking us for all our hard work and then we went home.

### Reflection

I felt very happy and pleased that someone important took in what we said and I got paid to be there. I hope I get another invitation to work with Adoption UK again. It was an amazing experience to be invited somewhere that could help so many people all across the United Kingdom.





## Lessons

We have had a great start to the new school year, with students showing amazing resilience and adaptability around change. Students have been engaging well with our new Careers curriculum, with many of our older students accessing the Career Planning unit from the Princes Trust award in Personal Development and Employability Skills. Other students have been accessing the Incredible Futures Careers curriculum, which has been designed by the Futures Team within OFG and is linked to AQA unit awards.

## Advice sessions

We have had 2 visits from our Futures Advisor, Oli Masters so far this year and more planned in for the Spring Term. Oli has been working with our older students to help them make decisions about their futures and next steps. Every student will have the opportunity to meet with Oli at some point in the year and most will have already seen him out and about at our Ark and Farm sites.

## Year 11 next steps

This can be a difficult time for our year 11's as they try to make the right choice on the best next step to take. For some, the decision is easier as they have a very good idea of the path they want to take, but for others the thought of change is too much to cope with. There are so many different routes and options available and we aim to inform our students about each of them. I am aware that they may also wish to talk to you at home about these options, so I thought I would share a website with you that might help if you need it:

<https://www.talkingfutures.org.uk/>

## Diary dates

National Apprenticeships week: 10<sup>th</sup>-16<sup>th</sup> February 2025

National Careers Week: 3<sup>rd</sup>-8<sup>th</sup> March 2025

Wessex Lodge School Careers Day: 13<sup>th</sup> May 2025

If you or anyone you know would like to get involved in any of these events, please do contact me. Our students benefit hugely from hearing from a variety of employees, employers and training providers, including apprentices and those self-employed.

Email: [LauraG@enhancedlearningservices.co.uk](mailto:LauraG@enhancedlearningservices.co.uk)

Laura Gregg - Careers Lead



## Dragonflies



During the Autumn term Dragonflies were able to take on the huge transition of starting a new chapter at Newmead Farm. Dragonflies have had many challenges during the autumn term from adapting to a new environment, new members of staff as well as adapting to new class peers.

As a class we have made many memories, one of the best adventures from the term was going to the pumpkin patch. The student really enjoyed going and taking their frustrations out on the pumpkins. The students loved shouting and screaming, playing games and making videos with the pumpkins. It was so lovely to see them all laughing together.



They've conquered their fears of heights, navigation as well as going the water with canoes. Harry really loved taking the challenge on to the water with the support from his class peers.

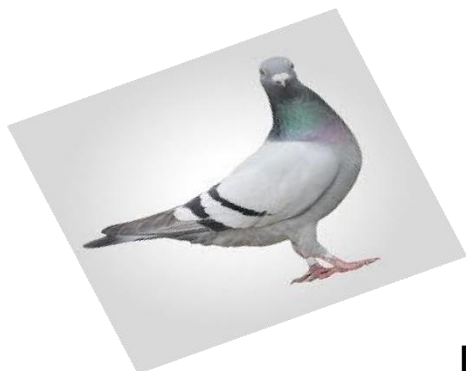
Jayden at the start of term started his new journey of going to college to study vehicle mechanics as well as studying towards functional skills.

Harry during this term has taken a shine to home cooking skills and has

mastered some delicious dishes which he has started to show casing his dishes to other members of staff.



**Chloe May – Tutor**



## Pigeons

As we come to the end of Autumn term1 I just want to say how Proud I am of all the students in Pigeon class and how well they have adapted to all the changes every single one of you should be so proud of yourselves.

Pigeon class has had an amazing term and have all worked extremely hard. They have all shown great teamwork in and out the class and some great friendships have been made. In English the class have been learning about alliteration and Similes and they have been coming up with some great answers of their own. Pigeons have also had some great farm lessons and have had lots of fun caring for the animals, with some of the students completing an AQA in that area which is an amazing achievement.

To finish off I want to wish you all a very merry Christmas and a happy new year, thank you for all your hard work.

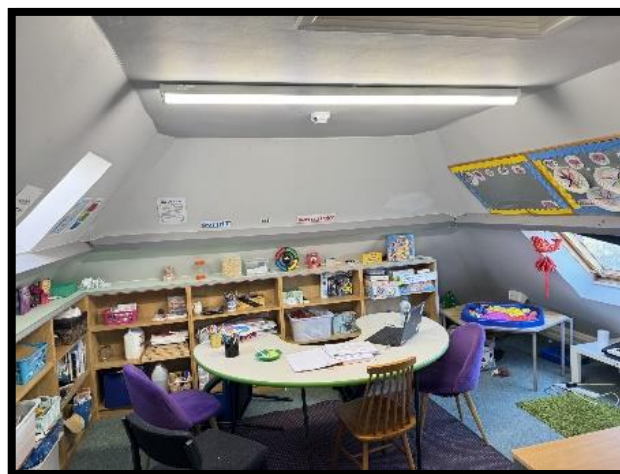




# Wessex Lodge School

CARE | ADAPTABILITY | RESILIENCE | EMPATHY

Outcomes  
First  
Group.



## Thrive

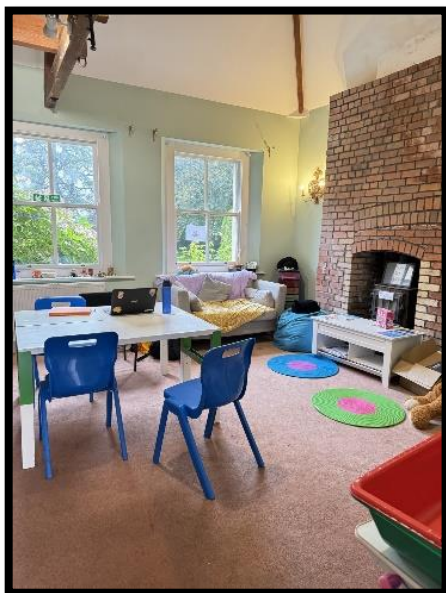
This term our whole school Thrive focus has been building positive relationships and encouraging the students to find their safe spaces. This has been an important part of the transition work where staff have successfully supported students to manage the big changes the sites have gone through.

We have set up/revamped the Thrive spaces on each site as a place for students to attend a

Thrive session and/or to visit when they need a break or finding things tricky during their day.

In the timetabled Thrive sessions we have been looking at Stephen Seigal's Healthy Mind Platter this term which is a useful tool to support mental wellbeing. Each student created their own platter and could see its benefits.

The Healthy Mind Platter is a metaphorical plate that includes seven daily mental activities essential for optimal brain function and emotional well-being. Just as a balanced diet supports physical health, a balanced "mind platter" supports Mental Health. - **Rebecca Miller**



## Mind Platter



*Following a healthy mind diet can provide us with the physical and mental well-being necessary to establish and maintain relationships with family, friends and colleagues...*



## EQUINE



This term in Equine, the students have been working towards achieving a variety of AQA unit awards. The weather hasn't always been on our side, but it hasn't stopped everyone working hard! All those who participate in equine have achieved at least one AQA certificate this term; Well done.

We held a remembrance ceremony with the students on the farm at the start of November and Kingsleigh worked hard to prepare Isla and hold her respectfully during the ceremony. Good work Kingsleigh and all those involved.

I look forward to starting our lessons in January.

- **Laura James**

-



## In *Science* this term we

have been working towards both GCSE and an entry level certificate in science. In GCSE the students have sat mock exams, and I want to congratulate them for working hard and gaining valuable exam experience. We have been learning about hydrocarbons, renewable fuel, ecosystem and material cycles.

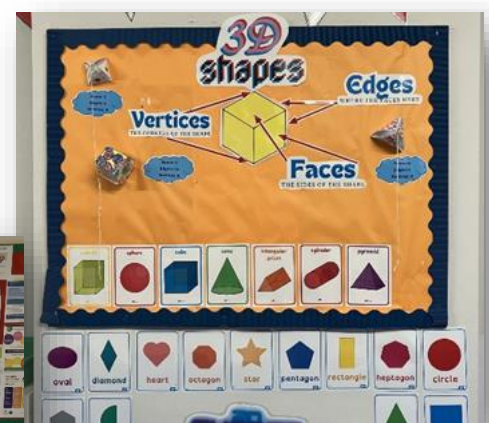
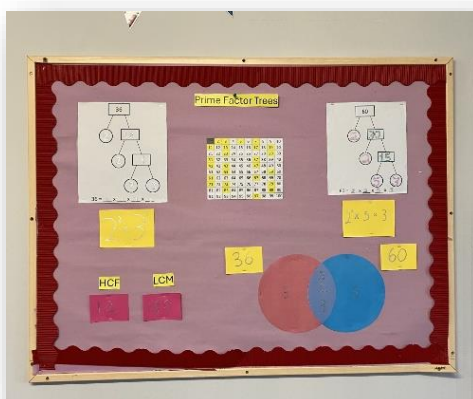
In the ELC we have been learning about different cell structures, elements, the periodic table and forces.

- **James Rigby Science Lead**



## Maths

It has been such a positive start to the new academic year. Engagement in lessons is high and lots of progress is being made. Some of our learners got involved with creating some of the classroom displays. We look forward to starting 2025 refreshed and enthusiastic for more learning to take place. -**Helen Wilkins Maths Lead**





## Design and Technology

The design and technology department continues to progress, and it has been at fine start to the year for the students. A much-improved dust extraction has been recently fitted to all machinery which is proving to be much more efficient, and the department has also built on its craft resources enabling pupils to learn weaving and jewellery making skills.

Preparing for the schools Remembrance Day gathering was a busy period for the students in DT. The children made wooden painted poppies and painted signs of remembrance, these were used as a backdrop at the site of our schools gathering and one minutes silence.



In the workshop the students have been learning how to produce finishes with paint. Hydro dipping was a technique that appealed to many students and here are some good examples of their work.



Flick-painting was used on this picture frame produced by one of our students, it was very successful and looks great!!!

Christmas decorations have been made by some of the students this team. This wooden Christmas tree ornament was produced using the woodworking lathe machine.



Christmas has also been celebrated with students making Christmas tree baubles such as this star shaped example.



- **Jamie Stratton- DT Teacher**



## *Physical Education*

What a fantastic first term we've had in the PE department. New students joining, old students excelling! Both ends of the journey have shown incredible progress this term in PE. We've had students breakdown barriers and the negative stigma they have of PE and participate in the lessons for the first time.

We have had students form new friendships through the lessons and help them embed themselves into the school. This term, I've also had one student support during PE lessons as he has a keen passion of coaching and is an avenue he is keen to explore. Over the course of the term, he started as just assisting but as we have reached the end he has started to plan and deliver his own lessons! Awesome work!

As we progress into the new year, I'm looking forward to seeing other leaders step up, students engagement and perception of PE to change and grow and a whole lot of fun to be had along the way! – **Andy Smith Teacher**

## *Forest School*

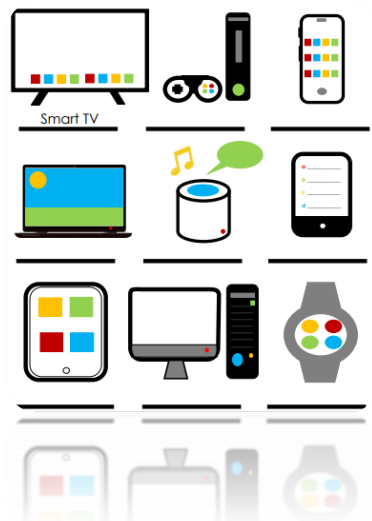
The first term back can always be a snap back to reality. However, for the students they picked up exactly where they left off in forest school! Keen to engage, despite the weather and with an eagerness to learn new skills in a different classroom then their used to. We've had the addition of a new teacher to help support across the other sites which has helped increase the work we do. Lots of our students have a negative outlook on school, so being able to offer them a different kind of classroom to feel relaxed and build relationships with staff and students is a massive bonus. We've been able to help a few students swap sites over the term and made that transition a lot smoother for all involved. Next term, we will be in the middle of winter so the student's perseverance and resolve against the weather will be a challenge but I'm convinced they will build their resilience and continue the fantastic work they've already shown!

-Jacobus Van Noppen (Toast) Teacher



## Information and Communications Technology

This year we are pleased to announce the return of I.C.T. to our timetable for our secondary site. We are delivering this in the form of the new Digital Functional Skills Qualification (DFSQ).

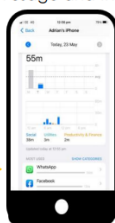


This task required the learners to identify nine digital devices. This then led to a group discussion centring around how much we all use various digital devices, whether this is actually necessary and how we might be able to cut down our usage.

A precise answer to this question can be found by checking your 'screen time'. Both Android and Apple phones enable you to see an accurate analysis of your phone and application usage. Follow the instructions below to see your own usage and then answer the questions.

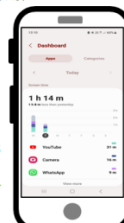
Apple  
iPhone/iPad

- Tap 'Settings'
- Select 'Screen Time'

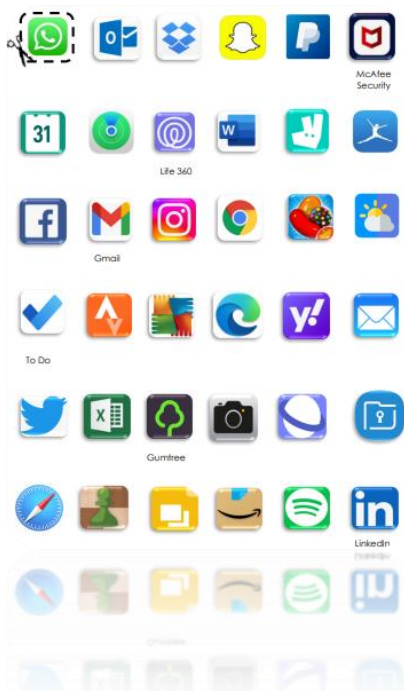


Android  
Mobile/Tablet

- Tap 'Settings'
- Select 'Digital wellbeing and Parental Controls'



Over the past term our learners have been focusing on learning about the differences between different operating systems, different categories of apps, how to carry out online searches safely and how to check their screen time on their devices and useful strategies to reduce this where necessary.

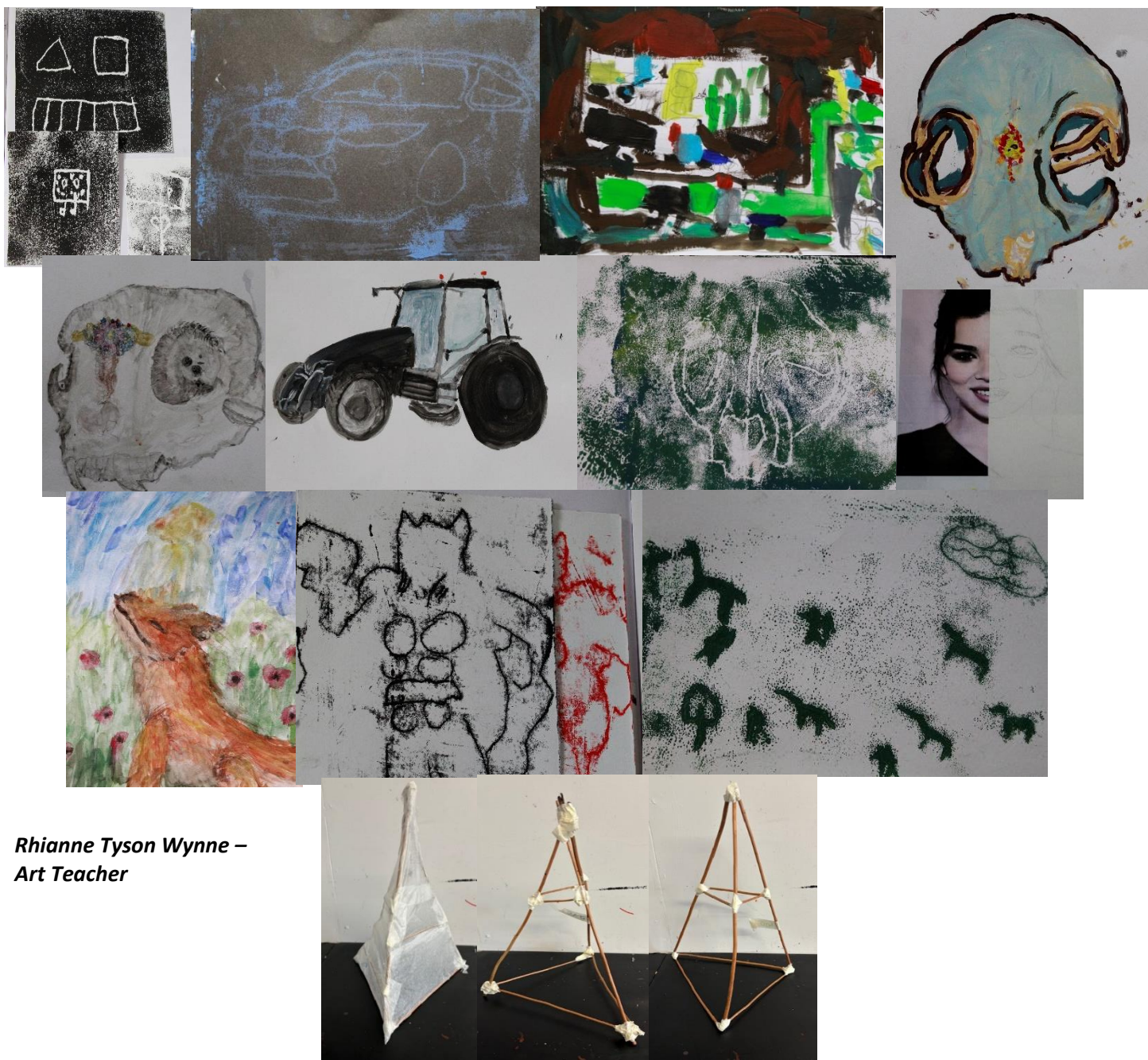


Learners were asked to identify as many icons as they could before categorising them into six groups.

- **Thomas Foote, Tutor**

## ART

Wessex Lodge School students have had a very busy term in Art. We have worked on increasing their art medium knowledge. Students have worked to learn good drawing techniques and embed this in everything they do in art. They have also worked with, water colour, Acrylic and Gouache paints, they have or are working towards mono printing and lino printing. They've each chosen their own topics which have ranged from super heroes, to skulls, to cars, to animals. Students have worked incredibly hard this term to complete everything they have. The end of term will see the students creating christmas lanterns to decorate their space in the communal areas, this has already begun in the form of Willow sticks and papier mache.



**Rhianne Tyson Wynne –  
Art Teacher**





## CELEBRATIONS IN HOME COOKING SKILLS THIS AUTUMN TERM....

OUR STUDENTS HAVE BEEN WORKING REALLY HARD AND WE WOULD LIKE TO SHARE AND CELEBRATE THEIR ACHIEVEMENTS:

- COMPLETING AQA UNIT CERTIFICATES AND REALLY SHOWCASING THEIR KNOWLEDGE AND PROGRESS
- TAKING OWNERSHIP IN THEIR WORK AND ALWAYS SHARING WITH THEIR PEERS AND STAFF
- DEVELOPING INDEPENDENCE SKILLS

..... HERE ARE SOME PHOTOS TO SHOWCASE THE WORK OF OUR  
YOUNG COOKS....



**Andrea Stuart Young**  
**Paola Villabos Jacks**  
**HCS Tutors**



# Wessex Lodge School

CARE | ADAPTABILITY | RESILIENCE | EMPATHY

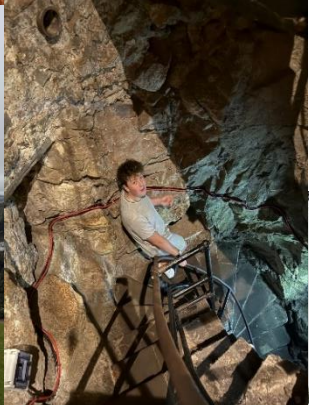
Outcomes  
First  
Group.



**Bespoke curriculum** is for the students that need some time away from formal education and or social situations that may be happening on site. To do this we take the students out individually to places that they can let off steam if needed or educational visits that are more for Kinaesthetic learners. These times give the teacher and pupil some one-to-one time and a good opportunity to talk through anxieties they may be experiencing, then leading us to work through strategies to help the pupil coming back to site comfortably and with confidence.

Some photos attached with this, is a visit to Clifton Suspension Bridge and the Observatory, where we went down into the Giants Cave and had a great view of the surrounding area of the Bridge, also reading the plaques with the history of the Bridge.

Another form of the bespoke curriculum, we take some of the pupils to and from College, These are pre 16 courses where they can do one day a week on a course of their choice that's available, to get a feel for if it is something they want to do post 16 full time. A few places we can visit are Museums, Football/Rugby Stadiums, Beaches, Fishing, Car Exhibitions, Castles any places that are of interest to the pupil. **Tracey Brawn, Ian Tiley & Reece**

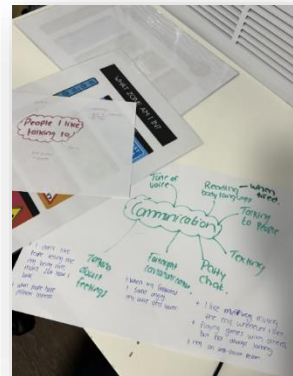




## The Clinical Team

We're thrilled to introduce two new members to our therapy team: Immy and Eli! They have already made a significant impact, bringing fresh perspectives and enthusiasm to our work.

Sylvia, Immy and Eli have been hard at work organising engaging therapy groups and 1:1 sessions. These sessions offer a supportive environment for students to develop essential social skills, regulation strategies, and problem-solving techniques.



We're excited about the positive changes our new team additions have brought to our clinical services across Wessex Lodge Schools, and we look forward to continuing our work with your children in the New Year!



At Wessex Lodge, we see firsthand the positive impact that acts of kindness can have on our peers' mental and emotional wellbeing. But when we give to others, we not only bring joy to them but also experience lower stress levels, increased feelings of satisfaction and a boost to our own self-esteem. The Christmas season is the perfect time to connect with our loved ones and reflect on how we can give back to our community.

By including acts of kindness into our holiday traditions we can create a more meaningful and fulfilling Christmas for ourselves and our loved ones.

Here are some ideas of acts of kindness we could take part in this break:

- \* Make a card or write a letter to lonely elderly.
- \* Donate old toys or books to the charity shop.
- \* Take part in the Samaritans Christmas Present Appeal
- \* Bake something for your family, friends or neighbours.



There are over 100 acts of kindness on GoodandKind.org How many can you complete this holiday season?

## Merry Christmas!

from The Clinical Team

## *Phoenix Class*



This term has been a truly wonderful one for the Phoenix class. The boys have transitioned seamlessly into their new classroom environment, adapting well and settling in with confidence. It has been heartening to see them form strong and meaningful relationships with one another, fostering a sense of mutual support.

Throughout the term, they have been learning the importance of kindness and respect, not only towards their peers but also in their interactions with staff and the wider school community.

In their studies, the boys showed enthusiasm and focus, engaging particularly well in English and Maths.

Among their favourite activities were the delightful cooking sessions with Paola, where they enjoyed creating tasty

dishes. They also enjoyed the visits to the farm, which allowed them to connect with nature and engage in hands-on learning experiences outside the classroom.

Congratulations to the Phoenix class for an amazing term! Your hard work, enthusiasm and growth have been a joy to witness. Keep up the fantastic effort! **Rossana Sotgiu- Teacher**







In *Griffin Class* over the past few weeks, we have been enjoying some Christmas crafting (including this Christmas window art), visited a local church to put up a Christmas display, and we have welcomed a new student, Fleur, to Griffin Class too.



# Wessex Lodge School

CARE | ADAPTABILITY | RESILIENCE | EMPATHY

Outcomes  
First  
Group.

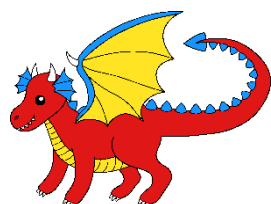


It's really lovely when students come back to school after a weekend excited to tell you their news. One student took that a step further by spending their weekend drawing some of the Primary Team. I think you will all agree that Alex is a fantastic artist and a great judge of character!



## Goblins Class

What an exciting start to our journey at Wessex Lodge Primary! As we settle into our beautiful, new site, it has been a joy to see the children embracing their new classrooms, making friends, and diving into their learning with enthusiasm and curiosity.



## Dragon Class

This term in Dragon class we have made bird feeders out of cereal hoops and pipe cleaners. We then explored the outside area to find a suitable place to hang the feeders. Whilst we were outside, we found a group of daffodils starting to grow. This led to some interesting learning all about bulbs. We cut a bulb in half and investigated what we could see.

In Maths Dragon class made cucumber towers and used a ruler to see whose tower was the tallest.

A great start to the year in Dragon class!!



## A Look at What We've Been Learning

This term, our main focus has been building community and exploring our environment. We have been making new friends, finding our safe places and getting to know the areas and adults around which we feel safe.

In Maths, we've been working on place value and having a good understanding of how numbers are made up. We have been using concrete resources to help us with our understanding. It's been wonderful to see the children's confidence grow as they tackle challenges and celebrate their successes.

We have been doing some great writing inspired by our own pictures during our English lessons. Here is a piece of work by one of the students in Goblin class based around the book .... These lessons have really encouraged some creativity and excellent drawings.

We've been up to all sorts of other interesting and exciting activities across many other lessons over the term.

We have enjoyed exploring our wider school community with visits to Newmead Farm and we have also made some wonderful memories on offsite trips, including walks out at Vallis Vale, a Remembrance Day trip to the local memorial and a visit to a local church to decorate it ready for Christmas. These experiences have been a fantastic way to bond as a class and create a sense of belonging in our new community.

**-Phil Pittard**



Kingsley holding his homemade bird feeder. We learnt about the needs for survival of birds.



Murray made his monster clay pot in one of our art sessions.



A trip to Vallis Vale





## Looking Ahead

As we continue through the term, we're looking forward to our first School wide activity day at Newmead Farm next week with the Christmas around the world event. We also have our end of term enrichment trip at Bath City Farm to look forward to. We will be getting a tour of the animal enclosures, meeting and feeding the animals. We are of course also looking forward to a well-deserved rest over the Christmas holidays.

## A Big Thank You

Thank you to parents and carers for your support in making this first term such a positive experience for the children.

From helping them be ready for each day to encouraging their efforts at home, your involvement makes a big difference to the experiences they gain here.

Here's to a fantastic start and many more wonderful moments to come!

**December Kindness 2024**

SUNDAY	MONDAY	TUESDAY	WEDNESDAY	THURSDAY	FRIDAY	SATURDAY
1 Spread kindness and share the December calendar with others	2 Contact someone you can't be with to see how they are	3 Offer to help someone who is facing difficulties at the moment	4 Support a charity, cause or campaign you really care about	5 Give a gift to someone who is homeless or feeling lonely	6 Leave a positive message for someone else to find	7 Give kind comments to as many people as possible today
8 Do something helpful for a friend or family member	9 Notice when you're hard on yourself or others and be kind instead	10 Listen wholeheartedly to others without judging them	11 Buy an extra item and donate it to a local food bank	12 Be generous. Feed someone with food, love or kindness today	13 See how many different people you can smile at today	14 Share a happy memory or inspiring thought with a loved one
15 Say hello to your neighbour and brighten up their day	16 Look for something positive to say to everyone you speak to	17 Give thanks. List the kind things others have done for you	18 Ask for help and let someone else discover the joy of giving	19 Contact someone who may be alone or feeling isolated	20 Help others by giving away something that you don't need	21 Appreciate kindness and thank people who do things for you
22 Congratulate someone for an achievement that may go unnoticed	23 Choose to give or receive the gift of forgiveness	24 Bring joy to others. Share something which made you laugh	25 Treat everyone with kindness today, including yourself!	26 Get outside. Pick up litter or do something kind for nature	27 Call a relative who is far away to say hello and have a chat	28 Be kind to the planet. Eat less meat and use less energy
29 Turn off digital devices and really listen to people	30 Let someone know how much you appreciate them and why	31 Plan some new acts of kindness to do in 2025				

**ACTION FOR HAPPINESS** **Happier · Kinder · Together**

# Wessex Lodge School

CARE | ADAPTABILITY | RESILIENCE | EMPATHY

Outcomes  
First  
Group.



## Academic calendar 2024/25 UK

Calendar<sup>co.uk</sup>  
Your source for calendars

September 2024							
Wk	M	Tu	W	Th	Fr	Sa	Su
							1
1	2	3	4	5	6	7	8
2	9	10	11	12	13	14	15
3	16	17	18	19	20	21	22
4	23	24	25	26	27	28	29
5	30						

October 2024							
Wk	Mo	Tu	W	Th	Fr	Sa	Su
6		1	2	3	4	5	6
7	7	8	9	10	11	12	13
8	14	15	16	17	18	19	20
9	21	22	23	24	25	26	27
	28	29	30	31			

November 2024							
Wk	Mo	Tu	W	Th	Fr	Sa	Su
					1	2	3
10	4	5	6	7	8	9	10
11	11	12	13	14	15	16	17
12	18	19	20	21	22	23	24
13	25	26	27	28	29	30	

December 2024							
Wk	M	Tu	W	Th	Fr	Sa	Su
							1
14	2	3	4	5	6	7	8
15	9	10	11	12	13	14	15
16	16	17	18	19	20	21	22
	23	24	25	26	27	28	29
	30	31					

January 2025							
Wk	Mo	Tu	W	Th	Fr	Sa	Su
			1	2	3	4	5
17	6	7	8	9	10	11	12
18	13	14	15	16	17	18	19
19	20	21	22	23	24	25	26
20	27	28	29	30	31		

February 2025							
Wk	Mo	Tu	W	Th	Fr	Sa	Su
21						1	2
22	3	4	5	6	7	8	9
23	10	11	12	13	14	15	16
	17	18	19	20	21	22	23
24	24	25	26	27	28		

March 2025							
Wk	M	Tu	W	Th	Fr	Sa	Su
25						1	2
26	3	4	5	6	7	8	9
27	10	11	12	13	14	15	16
28	17	18	19	20	21	22	23
29	24	25	26	27	28	29	30
30	31						

April 2025							
Wk	M	Tu	W	Th	Fr	Sa	Su
31		1	2	3	4	5	6
	7	8	9	10	11	12	13
	14	15	16	17	18	19	20
	21	22	23	24	25	26	27
32	28	29	30				

May 2025							
Wk	M	Tu	W	Th	Fr	Sa	Su
33				1	2	3	4
34	5	6	7	8	9	10	11
35	12	13	14	15	16	17	18
36	19	20	21	22	23	24	25
	26	27	28	29	30	31	

June 2025							
Wk	M	Tu	W	Th	Fr	Sa	Su
							1
37	2	3	4	5	6	7	8
38	9	10	11	12	13	14	15
39	16	17	18	19	20	21	22
40	23	24	25	26	27	28	29
41	30						

July 2025							
Wk	M	Tu	W	Th	Fr	Sa	Su
42		1	2	3	4	5	6
43	7	8	9	10	11	12	13
44	14	15	16	17	18	19	20
45	21	22	23	24	25	26	27
	28	29	30	31			

August 2025							
Wk	M	Tu	W	Th	Fr	Sa	Su
					1	2	3
	4	5	6	7	8	9	10
	11	12	13	14	15	16	17
	18	19	20	21	22	23	24
	25	26	27	28	29	30	31